



11



PVC-U MOLDED PARTS & INSTALLATION ACCESSORIES

Experience the outstanding quality of our certified, flexible adhesive hose again in the coming season! This versatile product is perfectly suited for underground installation and impresses with its chemical resistance, making it particularly popular with specialist dealers.

The new Badu Flow Sonic+ ultrasonic flow meter enables accurate flow measurement and optimum adjustment of frequency-controlled circulation pumps. Our sturdy pipes in PN16 or PN10 and high-quality PVC-U fittings are perfectly matched and offer a reliable solution for your installations. With our state-of-the-art cleaning and bonding materials, we guarantee durable, flexible and reliable piping.

Be sure to complement your ancillary equipment with our reliable MIDA.Fix - a polymer-based sealant and adhesive suitable for above and below water applications. Available in a range of colors including white, grey, black, transparent and Adriatic blue.

Take your installations to the next level!

OVERVIEW

		FLOW METERS, VALVES & BALL VALVES
NEW	P. 262	SPECK BADU Flow Sonic+ 
	P. 262	FlowVis flow meter 
	P. 263	Ball valves
	P. 264	Check valves
		FITTINGS
	P. 265	Fittings PVC-U
		ADHESIVE HOSES
	P. 275	Plasticized rigid PVC adhesive hose green
	P. 275	Chlorine-resistant adhesive hose white
	P. 275	PVC adhesive hose gray
		PIPES PVC-U
	P. 276	Pipes PVC-U gray & transparent
		GLUE & CLEANER
	P. 278	Glue
	P. 279	Cleaner
		ACCESSORIES & TOOLS
	P. 280	Accessories
	P. 282	Tools



FLOW METERS, VALVES & BALL VALVES

**SPECK BADU FLOW SONIC+**
FLOWMETER VIA ULTRASOUND**NEW**

For optimum adjustment of frequency-controlled circulation pumps with display, measuring range: 0-54 m³/h, max. salt content: 3% (30 g/l), material: PA/PP, connection 63 mm, PN10. Seals made of NBR and EPDM. Power supply 24 V DC, power consumption max. 10 W, output signal 4.20 mA / pulse (667/l)

**ENERGY-
SAVING** **SPECIAL ADVANTAGES**

- ✓ Precise flow measurement in m³/h
- ✓ No pressure loss, as there is no resistance like some manual flow meters
- ✓ No contamination of a float, as ultrasonic measurement

Technical data

Power supply	DC 24V SELV
Power consumption	50 mA, with digital output 300mA
Power consumption	max. 10 W
Nominal pressure stage	PN 10
Measuring range	0 - 54 m³/h
Connection	63 mm / DN 50
Analog output signal	4-20 mA
Digital output signal	Puls (667/l)
Medium temperature	0-45 °C

Article	Code
BADU FlowSonic+	FLOSO

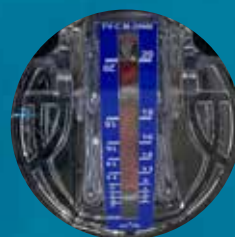
**Available from approx.
May 2024****FLOWVIS FLOW METER & CHECK VALVE**

It is a modern, affordable and reliable flow meter designed specifically for swimming pools, swim spas or other water systems. Flawless in operation and sophisticated in concept, FlowVis is a revolution in reliable water flow measurement. FlowVis enables optimal adjustment of the frequency-controlled circulation pump to optimize filtration and backwashing and thus guarantee maximum energy savings. A non-return valve is also integrated.

Key advantages:

- Reliable and precise flow measurement in m³/h
- Patented design: flow meter + check valve
- Quick installation, without calibration
- Measurement accuracy is not affected, even with air in the system
- Verified average accuracy of 97.9%
- Does not block, does not pop up and does not give inaccurate measurements
- Horizontal, vertical or overhead installation possible, other fittings have no influence
- Minimum pressure loss of max. 0.14 bar
- Very robust, a long service life of more than 15 years is possible
- Certified to NSF50 Level 1

Article	Flow	Code
FlowVis DN 40 mm / d50	2,4 - 21,6 m³/h	FloVis50
FlowVis DN 50 mm / d63	2,4 - 24,0 m³/h	FloVis63

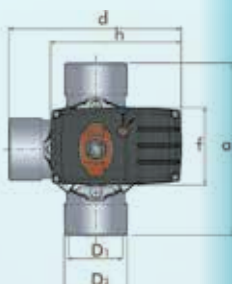




3-WAY ROTARY VALVE

WITH ADHESIVE SOCKETS - ELECTRICALLY OPERATED

Material: PVC-U, electric 3-way control valve made of PVC-U with rotation damper **including** closed position indicator, 230 V. With the automatic valve can be selected between 90° and 180°. Pump **must** be stopped before turning
Color: black



d1-d2	a (mm)	d (mm)	f (mm)	h (mm)
50-63	159	183	94	159
63-75	210	209	94	159

d1-d2	Code
50-63	41863
63-75	41864



#41863
#41864



MIDA.FLO

2- & 3-WAY ROTARY DISC VALVE

Material: PVC-U, pressure-resistant cover and turntable set made of Ultranyl, 10 bar operating pressure, 15 bar test pressure, low pressure loss. Adhesive connections 50 mm inside, 63 mm outside. Color: black

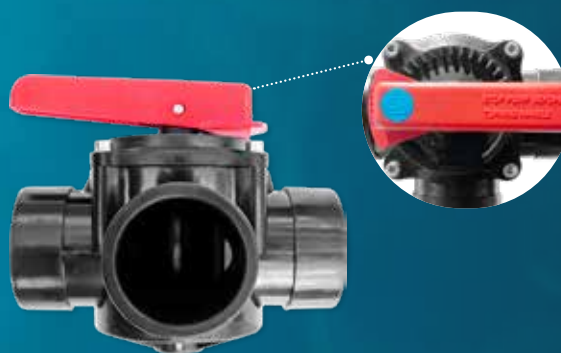
ADVANTAGES OVER A BALL VALVE

- ✓ Three sizes in one valve
- ✓ Adjustable positions
- ✓ Access from above

MIDA.FLO 2-WAY ROTARY DISK VALVE



MIDA.FLO 3-WAY ROTARY DISK VALVE



Typ	Adjustable positions	PU	Code
2-way rotary disk valve	10	8	301
3-way rotary disk valve	19	8	306



MIDAS 3-WAY BALL VALVE

Material: PVC-U, EPDM seal, HDPE shell with 3 adhesive connections, 10 bar operating pressure
Color: grey

d	Length mm	PU	Code
50	240	4	3395-T



#3395-T



MIDAS 2-WAY BALL VALVE



Material: PVC-U, with EPDM seal, adhesive connection on both sides, 16 bar operating pressure, color: grey. Rubberized, unscrewable handle, lockable ball and double stem seal.

TEFLON DISH

d	Length (mm)	PU	Code
50	149	10	395-P
63	174	10	396-P

TEFLON DISH

10 BAR OPERATING PRESSURE

d	Length (mm)	PU	Code
40	142	6	394-IC
50	167	10	395-IC*
63	198	12	396-IC*
75	232	4	397-IC
90	269	3	398-IC

*Acceptance only in full packaging units.

PE TRAY

10 BAR OPERATING PRESSURE

d	Length mm	PU	Code
40	134	6	394-C
50	148	10	395-C*
63	168	10	396-C*
75	232	4	397-C
90	269	2	398-C
110	275	3	399-C

*Acceptance only in full packaging units.

ANGLE SEAT CHECK VALVES

Angle seat check valves with floating pistons. Only suitable for fixed horizontal or vertical installation. High flow rate with small opening. Especially recommended for salt electrolysis

d	PU	Code
50	1	395-S
63	1	396-S



MIDAS CHECK VALVES

Material: PVC-U, spring-loaded, adhesive connection on both sides. Color: grey.

d	Length mm	PU	Code
40	140	6	384-C
50	160	12	385-C*
63	190	10	386-C*
75	232	4	387-C
90	269	2	388-C
110	279	2	389-C

*Acceptance only in full packaging units.



FITTINGS



ANGLE 90°

ADHESIVE SLEEVE/ADHESIVE SLEEVE

Material: PVC-U, color: grey

d	DN	PN	PU	Code
40	32	16	55	814 ¹⁾
50	40	16	60	815 ¹⁾ *
63	50	16	36	816*
75	65	16	21	817 ¹⁾
90	80	16	12	819
110	100	16	14	811

* Acceptance only in full packaging units.



REDUCTION ANGLE 90°



ADHESIVE FABRIC/ADHESIVE BACKING - ADHESIVE FABRIC INSIDE/OUTSIDE

Material: PVC-U, color: grey

d x D - d1	DN	PN	PU	Code
50 x 50 - 40	40	16	60	02237
63 x 63 - 50	50	16	32	02238



ANGLE 45°

ADHESIVE SLEEVE/ADHESIVE SLEEVE

Material: PVC-U, color: grey

d	DN	PN	PU	Code
40	32	16	60	824 ¹⁾
50	40	16	80	825*
63	50	16	45	826*
75	65	16	25	827 ¹⁾
90	80	16	15	829 ¹⁾
110	100	16	16	821

* Acceptance only in full packaging units.



1) **kiwa**

Quality tested by:
Kiwa-Germany, Construction and Building Materials Testing Division



REDUCTION ANGLE 45°



ADHESIVE FABRIC/ADHESIVE BACKING - ADHESIVE FABRIC INSIDE/OUTSIDE

Material: PVC-U, color: grey

d x D - d1	DN	PN	PU	Code
50 x 50 - 40	40	16	90	02241
63 x 63 - 50	50	16	45	02242



**TRANSITION ANGLE 90°**

GLUE SOCKET/INNER THREAD

Material: PVC-U, color: grey

d x threaded	DN	PN	PU	Code
40 x 1 ¼"	32	10	50	01731
50 x 1 ½"	40	10	28	01732
63 x 2"	50	10	16	01733
75 x 2 ½"	65	10	9	22596
90 x 3"	80	10	6	22597
110 x 4"	100	10	3	22598

**ANGLE 90° REINFORCED**

GLUE SOCKET/INNER THREAD

Material: PVC-U and stainless steel V2A/AISI 304, color: grey

d x threaded	DN	PN	PU	Code
20 x ½"	15	16	130	01740

**ANGLE 90°**

INTERNAL THREAD/INTERNAL THREAD

Material: PVC-U, color: grey

d	DN	PN	PU	Code
1 ½"	40	10	28	01738

**ANGLE 90°**

ADHESIVE SOCKET/EXTERNAL THREAD

Material: PVC-U, color: grey

d x threaded	DN	PN	PU	Code
50 x 1 ½"	40	10	80	02239
63 x 2"	50	10	42	02240





BEND 90°

ADHESIVE SLEEVE/ADHESIVE SLEEVE

Material: PVC-U, color: grey

d	DN	PN	PU	Code
40	32	16	25	01970
50	40	16	30	01971*
63	50	16	15	01972*
75	65	16	8	01973

*Acceptance only in full packaging units.



T-JOINT 45°

3 ADHESIVE MATS

Material: PVC-U, color: grey

d	DN	PN	PU	Code
40	32	16	30	864
50	40	10	32	865*
63	50	10	18	866*
75	65	10	11	867
90	80	10	6	869
110	100	10	7	861

*Acceptance only in full packaging units.



CROSS PIECE

4 ADHESIVE MATS

Material: PVC-U, color: grey

d	DN	PN	PU	Code
40	32	16	30	844
50	40	16	32	845*
63	50	16	16	846*
75	65	16	12	847
90	80	16	12	849
110	100	16	6	841

*Acceptance only in full packaging units.



T-JOINT 90°

3 ADHESIVE MATS

Material: PVC-U, color: grey

d	DN	PN	PU	Code
40	32	16	40	834 ¹⁾
50	40	16	48	835 ¹⁾ *
63	50	16	24	836*
75	65	16	15	837 ¹⁾
90	80	16	8	839
110	100	16	10	831

*Acceptance only in full packaging units.



**TRANSITION TEE 90°**

REDUCES 2 ADHESIVE SOCKETS/INNER THREAD

Material: PVC-U, color: grey

d x threaded	DN	PN	PU	Code
50 x 1 ¼"	40 - 32	10	24	01855
50 x 1"	40 - 25	10	24	01856
50 x ¾"	40 - 20	10	24	01857
50 x ½"	40 - 15	10	24	01858*
63 x 1 ½"	50 - 40	10	13	01859
63 x 1 ½"	50 - 32	10	14	01860
63 x 1"	50 - 25	10	15	01861
63 x ¾"	50 - 20	10	15	01862
63 x ½"	50 - 15	10	15	01863

*Acceptance only in full packaging units.

**TRANSITION TEE 90°**

2 ADHESIVE SOCKETS/INSIDE THREAD

Material: PVC-U, color: grey

d x threaded	DN	PN	PU	Code
40 x 1 ¼"	32	10	19	01799
50 x 1 ½"	40	10	21	01800*
63 x 2"	50	10	12	01801

*Acceptance only in full packaging units.

**T-PIECE REDUCED 90°**

3 ADHESIVE MATS

Material: PVC-U, color: grey

d x threaded	DN	PN	PU	Code
50 x 40	40 - 32	16	48	8504
50 x 32	40 - 25	16	48	8503
50 x 25	40 - 20	16	54	01822
50 x 20	40 - 15	16	56	01823
63 x 50	50 - 40	16	27	8635
63 x 40	50 - 32	16	28	8634
63 x 32	50 - 25	16	30	01826
63 x 25	50 - 20	16	30	01827
63 x 20	50 - 15	16	30	01828
75 x 63	65 - 50	16	16	8756
75 x 50	65 - 40	16	18	8755
75 x 40	65 - 32	16	18	01831
75 x 32	65 - 25	16	18	01832
90 x 75	80 - 65	16	9	01833
90 x 63	80 - 50	16	9	01834
90 x 50	80 - 40	16	9	01835
90 x 40	80 - 32	16	9	01836
110 x 90	100 - 80	16	11	01837
110 x 75	100 - 65	16	12	01838
110 x 63	100 - 50	16	12	01839
110 x 50	100 - 40	16	12	01840





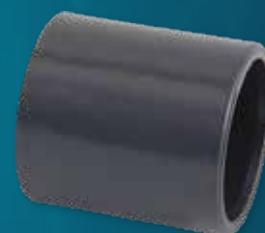
MUFFE

ADHESIVE SLEEVE/ADHESIVE SLEEVE

Material: PVC-U, color: grey

d	DN	PN	PU	Code
40	32	16	80	854 ¹⁾
50	40	16	56	855 ^{1)*}
63	50	16	34	856 ^{1)*}
75	65	16	14	857 ¹⁾
90	80	16	18	859
110	100	16	12	851

*Acceptance only in full packaging units.



REINFORCED TRANSITION SLEEVE

GLUE SOCKET/INNER THREAD

Material: PVC-U and stainless steel V2A/AISI 304, color: grey

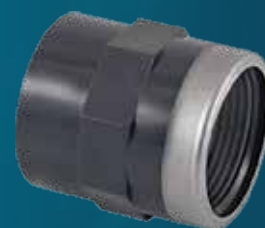
d x threaded	DN	PN	PU	Code
50 x 1 1/2"	40	16	56	01912*
63 x 2"	50	16	28	01913*

*Acceptance only in full packaging units.

1)

kiwa

Quality tested by:
Kiwa-Germany, Construction and Building Materials Testing Division



END CAP

ADHESIVE MUFFE

Material: PVC-U, color: grey

d	DN	PN	PU	Code
40	32	16	70	01946 ¹⁾
50	40	16	48	01947 ^{1)*}
63	50	16	24	01948 ^{1)*}
75	65	16	32	01949 ¹⁾
90	80	16	16	01950 ¹⁾
110	100	16	9	01951

*Acceptance only in full packaging units.

1)

kiwa

Quality tested by:
Kiwa-Germany, Construction and Building Materials Testing Division



TRANSITION SLEEVE NIPPLE

GLUE SOCKET/INNER THREAD

Material: PVC-U, octagonal. Color: grey

d x threaded	DN	PN	PU	Code
50 - 40 x 1 1/4"	32	10	40	02258
50 - 40 x 1 1/2"	40	10	40	02257*
50 - 40 x 2"	40	10	45	02256
63 - 50 x 1 1/2"	40	10	36	02261
63 - 50 x 2"	50	10	36	02260
63 - 50 x 2 1/2"	50	10	24	02259

*Acceptance only in full packaging units.





TRANSITION SLEEVE NIPPLE

ADHESIVE SOCKET/EXTERNAL THREAD

Material: PVC-U, octagonal. Color: grey

d x threaded	DN	PN	PU	Code
50 - 40 x 1"	25	10	70	02087
50 - 40 x 1 ¼"	32	10	68	02086
50 - 40 x 1 ½"	40	10	68	02085*
63 - 50 x 1 ¼"	32	10	60	02090
63 - 50 x 1 ½"	40	10	60	02089*
63 - 50 x 2"	50	10	46	02088*
75 - 63 x 1 ½"	40	10	30	02093
75 - 63 x 2"	50	10	30	02092
75 - 63 x 2 ½"	65	10	24	02091
90 - 75 x 2"	50	10	24	02096
90 - 75 x 2 ½"	65	10	15	02095
90 - 75 x 3"	80	10	12	02094

*Acceptance only in full packaging units.

1) **kiwa**

Quality tested by:

Kiwa-Germany, Construction and Building Materials Testing Division



TRANSITION MUFFE

ADHESIVE SLEEVE/OUTLET

Material: PVC-U, Color: grey

d x threaded	DN	PN	PU	Code
40 x 1 ¼"	32	10	80	02105
50 x 1 ½"	40	10	72	02106*
63 x 2"	50	10	50	02107*
75 x 2 ½"	65	10	24	02108
90 x 3"	80	10	28	02109

*Acceptance only in full packaging units.



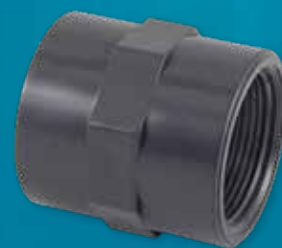
TRANSITION MUFFE

ADHESIVE SLEEVE/INSIDE

Material: PVC-U, octagonal. Color: grey

d x threaded	DN	PN	PU	Code
40 x 1 ¼"	32	10	60	01892
50 x 1 ½"	40	10	56	01893*
63 x 2"	50	10	28	01894*
75 x 2 ½"	65	10	14	01895
90 x 3"	80	10	24	01896

*Acceptance only in full packaging units.



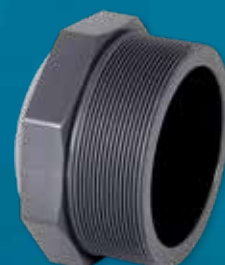
STOPFEN

ISSUE

Material: PVC-U, Octagonal. Color: grey

d	DN	PN	PU	Code
1 ¼"	32	10	80	02126
1 ½"	40	10	60	02127*
2"	50	10	70	02128
2 ½"	65	10	45	02129

*Acceptance only in full packaging units.





PRESSURE HOSE NOZZLE

ADHESIVE COVERING

Material: PVC-U, Color: grey

d x threaded	PN	PU	Code
16 x 16	10	200	02200
20 x 18	10	200	02201
20 x 20	10	200	02202
25 x 25	10	120	02203
32 x 30	10	80	02204
40 x 40	10	40	02205
50 x 50	10	30	02206*
50 x 38	10	40	02207*
63 x 60	10	18	02208

*Acceptance only in full packaging units.



PRESSURE HOSE NOZZLE

OUTSIDE THREAD

Material: PVC-U, Octagonal. Color: grey

d x threaded	PN	PU	Code
1 ½" x 38	10	36	02224*
1 ½" x 40	10	36	09032
1 ½" x 50	10	30	02223
2" x 60	10	15	02225

*Acceptance only in full packaging units.



REDUCTIONS SHORT

GLUE SOCKET/GLUE SPIGOT

Material: PVC-U, Color: grey

d x threaded	DN	PN	PU	Code
40 x 32	32	16	120	01918 ¹⁾
40 x 25	20	16	120	01919
40 x 20	15	16	120	01920
50 x 40	32	16	60	01921 ¹⁾ *
50 x 32	25	16	60	01922*
50 x 25	20	16	60	01923
50 x 20	15	16	60	01924
63 x 50	40	16	48	01925 ¹⁾ *
63 x 40	32	16	40	01926*
63 x 32	25	16	40	01927
75 x 63	50	16	28	01928 ¹⁾
75 x 50	40	16	28	18685
75 x 40	32	16	28	18686
90 x 75	65	16	36	01929 ¹⁾
90 x 63	50	16	36	18687
90 x 50	40	16	36	18688
110 x 90	80	16	16	01930
110 x 75	65	16	16	18689
110 x 63	50	16	16	18690

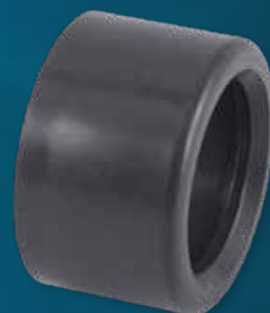
1)

kiwa

Quality tested by:

Kiwa-Germany, Construction and Building Materials Testing Division

*Acceptance only in full packaging units.



**REDUCTIONS LONG**

GLUE SOCKET/GLUE SPIGOT

Material: PVC-U, Color: grey

D - E x d	DN	PN	PU	Code
50-40 x 20	15	16	50	01982
50-40 x 25	20	16	40	01981
50-40 x 32	25	16	60	01980
50-40 x 40	32	16	30	01979
63-50 x 20	15	16	30	01987
63-50 x 25	20	16	30	01986
63-50 x 32	25	16	30	01985
63-50 x 40	32	16	46	01984
63-50 x 50	40	16	20	01983*
75-63 x 32	25	16	40	01991
75-63 x 40	32	16	40	01990
75-63 x 50	40	16	40	01989
75-63 x 63	50	16	26	01988
90-75 x 40	32	16	24	01995
90-75 x 50	40	16	48	01994
90-75 x 63	50	16	34	01993
90-75 x 75	65	16	12	01992
110-90 x 50	40	16	27	01999
110-90 x 63	50	16	27	01998
110-90 x 75	65	16	18	01997
110-90 x 90	80	16	16	01996

*Acceptance only in full packaging units.

**DOUBLE NIP**

OUTSIDE/OUTSIDE

Material: PVC-U, Octagon. Color: grey

d	DN	PN	PU	Code
1 1/2"	40	10	36	02116

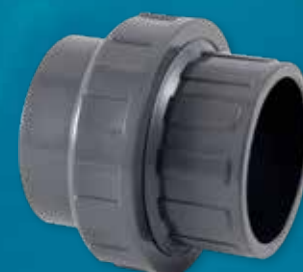
**3-PIECE SCREW CONNECTION**

2 ADHESIVE MATS

Material: PVC-U, Color: grey

d	DN	PN	PU	Code
40	32	10	40	874
50	40	10	30	875*
63	50	10	12	876*
75	65	10	16	877
90	80	10	12	879
110	100	10	5	871

*Acceptance only in full packaging units.





TRANSITION FITTING

ADHESIVE SLEEVE/OUTLET

Material: PVC-U, Color: grey

d x threaded	DN	PN	PU	Code
40 x 1 1/2"	32	10	36	02356
50 x 1 1/2"	40	10	30	02357*
63 x 2"	50	10	12	02358*
75 x 2 1/2"	65	10	16	02359

*Acceptance only in full packaging units.



SCREWING

ADHESIVE SOCKET/OUTLET WITH ADDITIONAL EPDM O-RING (FOR PUMPS)

Material: PVC-U, Color: grey

d x threaded	DN	PN	PU	Code
50 x 1 1/2"	40	16	30	07716
50 x 2"	40	16	12	26638
63 x 2"	50	16	12	07717



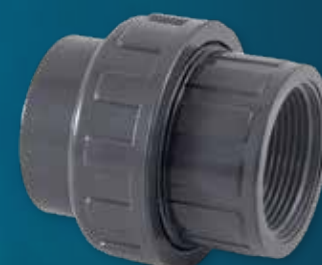
TRANSITION FITTING

ADHESIVE SLEEVE/INSIDE

Material: PVC-U, Color: grey

d x threaded	DN	PN	PU	Code
40 x 1 1/4"	32	10	40	02339
50 x 1 1/2"	40	10	30	02340*
63 x 2"	50	10	12	02341*
75 x 2 1/2"	65	10	16	02342

*Acceptance only in full packaging units.



REPLACEMENT O-RING FOR BALL VALVE + SCREW CONNECTION

d	PU	Code
D50mm x 1 1/2"	10	395-CE
D63mm x 2"	10	396-CE





ADHESIVE HOSES



PLASTIFIED HARD PVC ADHESIVE HOSE

FLEXIBLE

fitt b-active

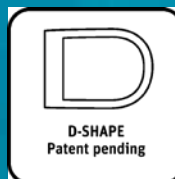
EVO
TECH

**SAFE
RECOVERABILITY**
The marking with a
transparent
with a transparent
protective layer is
permanently indelible.

THE ADVANTAGES AT A GLANCE

- Resistant to chlorine and chemicals
- Extremely resistant to crushing/extremely bendable
- perfect protection against cracking and embrittlement
- Delivery includes stopper
- can be stored outdoors, securely packaged individually in UV film- temperature-resistant from -10°C to +60°C

Also available individually.



* **INSURANCE GUARANTEE** for all damage caused by the rigid PVC hose to third parties, **including** removal of the defective hose and installation of a new plasticized rigid PVC hose.

SECURE STABILITY

The new EVO TECH technology additionally reinforces the hard spiral protective film (Spiral Protection Barrier technology) and makes the hose six times more resistant than other hoses.

SECURE FLEXIBILITY

The spiral with the D-shape area offers high resistance to crushing (up to 34 kN/m²), which, in conjunction with the use of high-quality materials, enables increased flexibility and a smaller bending radius (up to 125 mm).

SECURE PROTECTION

The CDS film (Chlorine Defence System) offers increased protection, even against chlorinated water and an acidic environment, and guarantees durability.

color: green-white

Performance tests (mechanical and chemical) carried out internally and in collaboration with the University of Padua - DTG laboratory. Certified by TÜV (test protocol no. MEC16173.00) in compliance with the European Directive Re. (EU)10/2011 for simulants A-B-C. Note: Tolerance according to the UNI EN ISO 1307: 2008 standard. Thermoplastic products are subject to deformation due to external temperature and retraction, the length tolerance is $\pm 5\%$.

Ø (outside x inside)	Operating pressure	Burst pressure	Bending radius	Length	Pallet quantity	Code
50 x 42 mm	6 bar	18 bar	125 mm	25 m	12	8351
50 x 42 mm	6 bar	18 bar	125 mm	50 m	8	8352
63 x 55 mm	4 bar	12 bar	165 mm	25 m	6	8353
63 x 55 mm	4 bar	12 bar	165 mm	50 m	4	8354



CHLORINE-RESISTANT ADHESIVE HOSE

FLEXIBLE

A rigid spiral clad with a crack protection barrier co-extruded in the hose with patented Spiral Protection Barrier®, which guarantees excellent resistance and strength to stresses in the substrate.

Chlorine-resistant, flexible, smooth surface, mold protection, resistant to microorganisms, calibrated diameter

Temperature resistance: -5°C to +60°C

Color: white/blue

Complies with the UNI EN ISO 3994 standard.

TÜV approval no. Z1 16 10 55285 006

is subject to constant control.

European patent number 2209850

The tolerances comply with the standard

UNI EN ISO 1307:2008.

The length tolerance is $\pm 5\%$, also available individually



Ø (outside x inside)	Operating pressure	Burst pressure	Bending radius	Length	Pallet quantity	Code
50 x 42 mm	5 bar	15 bar	165 mm	25 m	12	8301
50 x 42 mm	5 bar	15 bar	165 mm	50 m	8	8302
63 x 55 mm	4 bar	12 bar	220 mm	25 m	6	8303
63 x 55 mm	4 bar	12 bar	220 mm	50 m	4	8304
75 x 65 mm	4 bar	12 bar	220 mm	25 m	3	8305



PVC ADHESIVE HOSE

FLEXIBEL

Hose for supply systems for whirlpools and swimming pools. Externally calibrated, for a perfect connection with standard connections Spiral PVC hose, smooth inside and out, material: PVC

Temperature resistance: -5°C to +50°C,

color: grey, also available individually



Ø (outside x inside)	Operating pressure	Bursting pressure	Bending radius	Length	Pallet quantity	Code
40 x 32 mm	7 bar	21 bar	100 mm	25 m	16	8224M
50 x 42 mm	5 bar	15 bar	165 mm	12 m	16	8230M
50 x 42 mm	5 bar	15 bar	165 mm	25 m	12	8225M
50 x 42 mm	5 bar	15 bar	165 mm	50 m	8	8229M
63 x 55 mm	4 bar	12 bar	220 mm	25 m	6	8226M
75 x 65 mm	2,5 bar	7,5 bar	400 mm	25 m	3	8227M
90 x 80 mm	3 bar	9 bar	310 mm	25 m	4	8231M



PIPES PVC-U

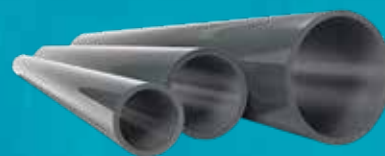


PIPE PN 16

EXCLUSIVE
MIDAS

- Material: PVC-U
- For gluing
- Pipe length 2.4 m: smooth ends on both sides (price per rod)

Color: grey



	d	Wall thickness mm	Pipe length m	pcs. per pallet	Code
Pipe length 2,4 m	50	3,7	2,4	215	8295.2,4m
	63	4,7	2,4	109	8296.2,4m
	75	5,6	2,4	100	8297.2,4m
	90	6,7	2,4	74	8299.2,4m

Weitere Durchmesser auf Anfrage lieferbar.
Auch einzeln erhältlich



ROHR PN 10

EXCLUSIVE
MIDAS

- Material: PVC-U
- For gluing
- Tube length 2.4 m: smooth ends on both sides (price per rod)

Color: grey



	d	Wall thickness mm	Pipe length m	pcs. per pallet	Code
Pipe length 2,4 m	50	2,4	2,4	215	8195.2,4m
	63	3,0	2,4	109	8196.2,4m
	75	3,6	2,4	100	8197.2,4m
	90	4,3	2,4	74	8199.2,4m

Other diameters available on request.
Also available individually

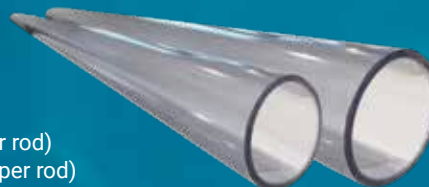


TRANSPARENT TUBE PN 16

EXCLUSIVE
MIDAS

- Material: PVC-U
- For gluing
- Tube length 2.5 m length (Ø 50 mm): smooth ends on both sides (price per rod)
or tube length 2.0 m length (Ø 63 mm): smooth ends on both sides (price per rod)

Color: transparent



d	Wall thickness mm	Pipe length m	Code
50	3,5	2,5	8495.2,5
63	4,0	2,0	8396.2

Also available individually.



TAPPING CLAMP



Reinforced edge (stainless steel),
with inner end Material: polypropylene with EPDM seal

d	PU	Code
50 x 3/4"	60	0165
50 x 1/2"	60	0166
63 x 1/2"	40	0167
63 x 3/4"	40	0168
75 x 1/2"	25	0169
75 x 3/4"	25	0170



PIPE CLAMP WITH FOLDING BRACKET



Min. quantity 10 pieces

Material: Polypropylene

d	PU	Code
50 x 1 1/2"	250	8251
63 x 2"	150	8252
75 x 2 1/2"	80	8253



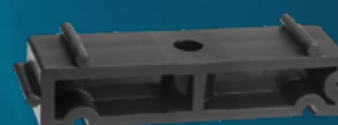
SPACER



Min. quantity 10 pieces

For pipe clamp with hinged bracket for ideal wall mounting,
especially for ball valves Material: polypropylene; height: 20 mm

d	PU	Code
50 x 1 1/2"	250	8255
63 x 2"	150	8256
75 x 2 1/2"	80	8257



PIPE CLAMP WITH BOW



Material: Polypropylene

d	PU	Code
50	100	8215
63	50	8216
75	40	8217





GLUE & CLEANER



MIDA.FIX 3000

UNIVERSAL SEALANT AND ADHESIVE

Application for stone (non-porous), concrete, natural stone, plaster, polycarbonate, PSU, PVC, various plastics, mirrors, glass, ceramic tiles, enamel, copper, lead, zinc, aluminum, stainless steel, wood

ADVANTAGES

- For underwater and above-water applications
- Very high mechanical strength
- For stress-equalizing bonding
- Free from solvents, isocyanate, phthalate and silicone
- Resistant to weathering and ageing - Resistant to salt and chlorinated water
- Anti-fungal and mold-inhibiting effect
- Suitable for pond liners- Compatible with natural stone
- Can be painted over (with emulsion paints)
- Sandable
- Odorless
- Shore hardness 60
- 300 % elongation at break (no expansion joints)
- Temperature resistance from -40°C to +100°C- Permanently elastic
- Fast curing properties
- Color-fast
- No shrinkage

CONTENT: 440 GRAMS (CARTRIDGE)

Color	Code
white	MF-3000W
gray	MF-3000G
black	MF-3000B
transparent	MF-3000t
adriatic blue	MF-3000A

Also available individually



CONTENT: 60 GRAM (TUBE)

Color	PU	Code
white	12	MF-60W





UNI-100 PVC ADHESIVE

Thixotropic adhesive for rigid PVC, fast-curing. Ideal for pipe connections in pressure and systems up to 315 mm diameter, max. 16 bar. Features: Special brush, fast setting, thixotropic, gap-filling. Temperature resistance: 60°C (briefly up to 95°C), viscosity: approx. 2500 mPa/s, solids content: approx. 23%, density: approx. 0.97 g/cm³. Color: grey (transparent).

Article	PU	Code
125 ml tube	30	8000
250 ml can with brush	24	8001
500 ml can with brush	12	8002
1,000 ml can with brush	8	8003



WDF-05 PVC ADHESIVE

Blue, fast-curing thixotropic PVC adhesive for flexible pipes up to 160 mm in diameter. Suitable for pressure and waste water systems up to 16 bar. Ideal for swimming pools and whirlpools. Features: Special brush, quick release, very fast curing, gap-filling. Temperature resistance: 60°C (briefly 95°C), viscosity: approx. 1500 mPa/s, solids content: approx. 17%, density: approx. 0.99 g/cm³. Color: Blue (transparent).

Article	PU	Code
125 ml can with brush	10	8103
250 ml can with brush	12	8100
500 ml can with brush	12	8101
1,000 ml can with brush	8	8102



DRYING TIMES

Ø	16 – 50 mm			63 – 110 mm			125 – 160 mm		
°C	5 bar	10 bar	16 bar	5 bar	10 bar	16 bar	5 bar	10 bar	16 bar
5°C–15°C	30 min.	1 Std.	4 Std.	1 Std.	2 Std.	8 Std.	4 Std.	16 Std.	32 Std.
> 15°C	15 min.	30 min.	2 Std.	30 min.	1 Std.	4 Std.	2 Std.	8 Std.	16 Std.



PVC ADHESIVE BLUE



Adhesive for joining piping elements made of soft (elastic) and rigid PVC (PVC-U). Suitable for water inlets and outlets in pools and for pressure pipes with a diameter ≤ 100 mm. Does not run off even on vertical surfaces.

Article	PU	Code
125 ml can with brush	12	8110
250 ml can with brush	12	8111
500 ml can with brush	12	8112
1,000 ml can with brush	6	8113

DRYING TIMES

Ø	20 – 63 mm			64 – 100 mm		
	0-10 bar	10 - 25 bar	25 - 40 bar	0-10 bar	10 - 25 bar	25 - 40 bar
	15 min.	1 Std.	24 Std.	30 min.	1 Std.	24 Std.



PVC-UNIVERSAL-CLEANER



For cleaning and degreasing pipes, sleeves and fittings made of rigid PVC, PVC, PVC-C and ABS to be bonded. Also suitable for removing uncured adhesive residue and for cleaning brushes and tools. Not suitable for thinning PVC, PVC-C and ABS adhesives. Properties: universal, very strong cleaning effect, viscosity: approx. mPa/s. Color: Transparent

Article	PU	Code
125 ml can with brush	20	8200
500 ml can with brush	12	8201
1,000 ml can with brush	6	8202



**PVC-UNIVERSAL-CLEANER**

The PVC universal cleaner improves the adhesive properties by dissolving the surface layer and is ideal for the adhesive "PVC adhesive blue" #8110 - #8113, as well as for all other adhesives for PVC-U and rigid, as well as flexible PVC.

Article	PU	Code
125 ml can with brush	12	8205
250 ml can with brush	12	8206
1,000 ml can with brush	6	8207

**PVC-UNIVERSAL-CLEANER**

Cleaning/solvent agent for preparing plastic surfaces before bonding. Compatible with all common plastics (PVC-U, soft PVC, PVC-C and ABS), cleans plastic connectors, improves the adhesion and bonding properties of PVC adhesives by dissolving the surface layer, removes dust, multidirectional use possible, is ideally suited for the adhesive "PVC adhesive blue" #8110 - #8113.

Article	PU	Code
125 ml bottle	4	8058

**FEUCHTE REINIGUNGSTÜCHER**

For cleaning and degreasing pipes, sockets and fittings made of PE, PP, PVDF and PB. Also suitable also suitable for cleaning welding equipment. High cleaning power, fast and residue-free evaporation, lint-free, 15 x 19.5 cm

Article	PU	Code
Moist cleaning cloths per 100 pcs.	6	8038



ACCESSORIES

**FERMIT EMERGENCY KIT**

For pipe damage, leaks and leaks around the pool

Scope of delivery:

- Self-welding sealing tape
- Repair compound for leaks
- Repair kit for pool liners
- Sealing tape for permanent sealing of holes and cracks
- Silicone fitting grease
- Plastic sealant
- PTFE Teflon tape

Article	Code
Fermit emergency kit	8114

**LINT-FREE CLEANING CLOTHS**

Absorbent, lint-free cloth for cleaning and degreasing pipes, sockets and fittings made of PE, PP, PVDF and PB. Also suitable for removing uncured adhesive residue. 23 x 41 cm, 100 pieces.

Article	PU	Code
Lint-free cleaning cloths	6	8037





SKIMMER REPAIR

For repairing cracks in skimmers. Resistant to pool water treated with chlorine, salt and ozone, seals leaks and reinforces ABS parts (skimmers, floor drains, multi-port valves). Consistency: gel, color: transparent beige, color after drying: white, for cracks of: 1-5 mm, time to complete drying: 24 hours. Also available individually.

Article	PU	Code
125 ml can	12	8057



LECK-FIX

Leck-Fix seals small leaks in swimming pools of various types (concrete, polyester, acrylic, waterproofing tarpaulin), as well as in pipes laid in the ground. The sealant can stop leaks in the order of 0.5 m³ to 0.8 m³ per day for pools between 50 m³ and 60 m³. pool size between 50 m³ and 60 m³ can be treated (corresponds to lowering the water level by approx. water level by approx. 2 centimeters for a pool measuring 10 m x 5 m). Unfortunately, more extensive measures are necessary for more extensive damage, also available separately. Application 1 liter up to max. 60 m³ pool. Also available individually.

Article	PU	Code
Leck-Fix 1l	6	8040



PLASTIC SEALING

Quick and clean. D-sealant from the tube. Suitable for plastic/plastic joints (PVC, PVC-C, PP, ABS, PE) and mixed metal/plastic joints.

Article	PU	Code
100g tube	6	8041



REPAIR COMPOUND FOR LEAKS

Two-component epoxy sealant in the form of modeling clay (10cm) for cementing, repairing and for the quick assembly of all rigid and semi-rigid plastics, even under water. Suitable for plastics such as PVC, PVC-C, ABS (with the exception of PE, PP and PTFE) and most common materials (glass, wood, metal, copper, concrete). After curing, the product can be machined, drilled, sawn, filed and painted like metal.

Article	PU	Code
Repair compound	6	8042



SILICONE FITTING GREASE

Grease based on 100 % silicone oil and inert fillers. For greasing and lubricating stopcocks and valves on pools, irrigation systems and installations in a marine environment. Prevents limescale deposits from the water on the lubricated parts. Water-repellent: Suitable for devices that transport warm, aqueous solutions. Also available separately.

Article	PU	Code
30g Tube	40	8044
100g Tube	15	8056





PTFE SEALING TAPE

Sealing tape made of 100 % pure, unsintered PTFE

- Prevents rusting (easy to remove even after years)
- Chemical resistance to the most aggressive media
- Does not become brittle, swell or stick, contains no oil or grease
- Removable, non-flammable, resistant to fungal attack, no expiry date
- 12 m long x 12 mm wide x 0.8 mm thick

Article	PU	Code
Roll 12 m	10	8043



KOLMAT® FIBER SEA

UNIQUE PRODUCT: TURN BACK > 180

For sealing conical and cylindrical metal and plastic connections (plastics/plastics and plastics/metal). Suitable for cold and hot water and (compressed) air. Suitable for e.g. PVC, CPVC and ABS, possibly in combination with copper, brass, (galvanized) steel and stainless steel. Also available separately.

Dimensions	PU	Code
14 mm x 15 m	30	8030



KOLMAT® PLASTIC

SEALANT FOR CONICAL AND CYLINDRICAL SYNTHETIC D-JOINTS

Kolmat® Plastic is a unique product for adjusting D-connections. Sockets, connections or taps can be installed in the correct position without the risk of leaks. Even when turned back by more than 180°, the connection remains 100% tight. Temperature resistance: from -50°C to +120°C, chemical base: silicone elastomer (alkoxy), 125 g, color: white

Article	PU	Code
Kolmat Plastic	6	8031



TOOLS

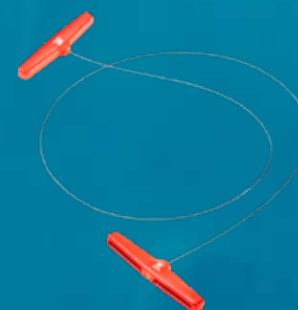


WIRE SAW

FOR SAWING PLASTIC PIPES

Ideal for sawing in hard-to-reach places. For plastic pipes made of PVC, PVC-C, PP and PE. Thin rope with coarse cut for fast applications, with sturdy handles, length: 90 cm.

Article	Code
Wire saw	8036



JAPANESE SAW

Very flexible Japanese saw, adjustable handle, ideal for hard-to-reach places, cuts wood, plastics, PVC pipes.

Article	Code
Japanese saw	80360
Replacement saw blade for Japanese saw	80360-E1





DEBURRING TOOL FOR OUTDOORS

FOR BEVELING PLASTIC PIPES

For plastic pipes made of PVC, PVC-C, ABS, PP and PE. Suitable for diameters $16 \leq 63$ mm. Creates a beveled corner of 15° , prevents adhesive leakage

Article	Code
Deburring tool	8035
Replacement blades for deburring tool	8035-E1



DEBURRER FOR INSIDE

to remove the inner burr from the cut pipe, for plastic pipes made of PVC, PVC-C, ABS, PP and PE, prevents adhesive from leaking

Article	Code
Deburrer	80358
Replacement blade for deburrer	80358-E1



UNIVERSAL PLASTIC PIPE CUTTER

SUITABLE FOR ALL PVC-U PIPES

Article	Rohrgröße	Code
Universal plastic pipe cutter	6-50 mm	80355
Universal plastic pipe cutter	6-67 mm	80356
Spare cutting wheel (#80355 + #80356)		80355-E1



CORNER PIPE WRENCH S-JAW

Infinitely adjustable, fixed by captive adjusting nut, high strength, durable and wear-resistant thanks to induction-hardened teeth, suitable for metal connections

Article	Code
Corner pipe wrench S-jaw 1 1/2"	80350
Corner pipe wrench S-Maul 2"	80351



HOSE SCISSORS

Ideal for cutting plastic, PV swimming pool hoses up to 63 mm. Lightweight, several working areas possible. Spare blades available

Article	Code
Hose shears 63 mm	80359
Spare blade 63 mm	80359-E1





ALWAYS AN OPEN
EAR FOR YOU!

YOUR SATISFACTION IS OUR MISSION!

NOTES

- Prices valid from 01.03.2024 until further notice
- All prices are ex works Neuhof-Dorfborn, plus packaging, breakage, glass and transport insurance and shipping
- Spare part prices are excluded from discounts
- Minimum quantity surcharge: 30.00 euros for orders under 75.00 euros net value of goods
- Products may only be returned in their original packaging and subject to a 15% handling and restocking fee.
- With the publication of this price list, all previous price lists, special prices and special offers become invalid
- Price adjustments in the event of price increases by upstream suppliers are possible at any time
- Subject to errors, price and technical changes
- Color and dimensional deviations correspond to the usual tolerances
- Assortment, model and color changes reserved
- No liability is assumed for printing errors
- Place of jurisdiction and place of fulfillment is our registered office

REGISTERED OFFICE & ADDRESS

MIDAS Pool Products GmbH
In der Eller 27
36119 Neuhof-Dorfborn

☎ +49 (0) 6655 90 230 - 0
✉ info@midas-gmbh.de



GENERAL TERMS AND CONDITIONS OF SALE (GTCS) OF MIDAS POOL PRODUCTS GMBH

1. SCOPE OF APPLICATION, FORM

1.1 These General Terms and Conditions of Sale (GTCS) apply to all our business relationships with our customers ("Buyer"). The GTCS shall only apply if the Buyer is an entrepreneur (Section 14 of the German Civil Code (BGB)), a legal entity under public law or a special fund under public law. Upon conclusion of the contract, the Buyer confirms that it is an entrepreneur, a legal entity under public law or a special fund under public law.

1.2 The GTCS apply in particular to contracts for the sale and/or delivery of movable goods ("Goods"), irrespective of whether we manufacture the Goods ourselves or purchase them from suppliers (Sections 433, 650 BGB). Unless otherwise agreed, the GTCS in the version valid at the time of the Buyer's order or in any case in the version last communicated to him in text form shall also apply as a framework agreement for similar future contracts without us having to refer to them again in each individual case.

1.3 Our GTC apply exclusively. Deviating, conflicting or supplementary general terms and conditions, in particular the Buyer's terms and conditions of purchase, shall only become part of the contract if and to the extent that we have expressly agreed to their validity. This requirement of consent shall apply in any case, for example, even if the Buyer refers to his General Terms and Conditions in the context of the order and we do not expressly object to them.

1.4 Individual agreements (e.g. framework supply agreements) and information in our order confirmation take precedence over the GTCS.

1.5 All agreements made with us are recorded in text form and are only valid if they are made at least in text form. Collateral agreements and assurances as well as amendments or supplements to a contract concluded in text form must be made in text form. This also applies to the waiver of the text form requirement.

2. OFFER AND ORDER CONFIRMATION

2.1 Our offers are subject to change and non-binding. This shall also apply if we have provided the Buyer with catalogs, technical documentation (e.g. drawings, plans, calculations, references to DIN standards), other product descriptions or documents - also in electronic form - to which we reserve ownership rights and copyrights in accordance with the following Section 2.4.

2.2 The order of the goods by the Buyer shall be deemed a binding contractual offer. Unless otherwise stated in the order, we are entitled to accept this contractual offer within 5 days of its receipt by us.

2.3 Acceptance can be declared either by our order confirmation or by delivery of the goods to the buyer.

2.4 As the supplier, we reserve all property rights and copyrights to all offer documents, drawings, calculations, illustrations and similar information, whether tangible or intangible, including the electronic form of these documents. Third parties They may only be made accessible to third parties with our written consent and must be returned to us immediately upon request if the order is not concluded.

2.5 For deliveries abroad and for the first order of a new customer, the remuneration to be paid to us must always be paid in full in advance.

3. DELIVERY PERIOD AND DELAY IN DELIVERY

3.1 The delivery period shall be agreed individually by stating the delivery period in our order confirmation upon acceptance of the order. If this is not the case, the delivery period is approx. 4 weeks from conclusion of the contract.

3.2 If we are unable to meet binding delivery deadlines for reasons for which we are not responsible (non-availability of the service), we shall inform the buyer of this immediately and at the same time inform the buyer of the expected new delivery deadline. If the service is also not available within the new delivery period, we shall be entitled to withdraw from the contract in whole or in part; we shall immediately reimburse any consideration already paid by the Buyer. Non-availability of the service is for example in the event of late delivery to us by our suppliers, if we have concluded a congruent hedging transaction, in the event of other disruptions in the supply chain, for example due to force majeure or if we are not obliged to procure in individual cases.

3.3 The occurrence of our delay in delivery shall be determined in accordance with the statutory provisions. In any case, however, a reminder from the buyer is required. If we are in default of delivery, the buyer may demand lump-sum compensation for the damage caused by the delay. The lump-sum compensation shall amount to 0.5% of the net price (delivery value) for each completed calendar week of delay, up to a maximum of 5% of the delivery value of the goods delivered late. We reserve the right to prove that the buyer has not suffered any damage at all or only a significantly lower damage than the above lump sum.

3.4 The rights of the Buyer pursuant to § 8 of these GTCS and our statutory rights, in particular in the event of an exclusion of the obligation to perform (e.g. due to impossibility or unreasonableness of performance impossibility or unreasonableness of performance and/or subsequent performance) shall remain unaffected.

3.5 Partial deliveries are permissible if they are reasonable for the buyer, taking into account the interests of both parties.

4. DELIVERY, TRANSFER OF RISK, ACCEPTANCE, DEFAULT OF ACCEPTANCE, RETURN

4.1 Delivery shall be made in accordance with the trade term specified in the individual contract or our offer and/or our order confirmation, for the interpretation of which the INCOTERMS® 2020 shall apply. Unless expressly agreed otherwise, deliveries shall be made ex works of the supplier (36119 Neuhoof, In der Eller 27), which is also the place of performance for the delivery and any subsequent performance. At the request and expense of the Buyer, the goods shall be shipped to another destination (sale to destination). Unless otherwise agreed, we shall be entitled to determine the type of shipment (in particular transport company, shipping route, packaging) ourselves.

4.2 The risk of accidental loss and accidental deterioration of the goods shall pass to the Buyer upon delivery in accordance with Section 4.1. In the case of sale by dispatch, however, the risk of accidental loss and accidental deterioration of the goods as well as the risk of delay shall in any case pass to the Buyer upon delivery of the goods to the forwarding agent, carrier or other person or institution designated to carry out the shipment. person or institution designated to carry out the shipment. If acceptance has been agreed, this shall be decisive for the transfer of risk. The statutory provisions of the law on contracts for work and services shall also apply accordingly to any agreed acceptance. If the Buyer is in default of acceptance, this shall be deemed equivalent to handover or acceptance.

4.3 If the buyer is in default of acceptance, fails to cooperate or if our delivery is delayed for other reasons for which the buyer is responsible, we shall be entitled to demand compensation for the resulting damage including additional expenses (e.g. storage costs). For this we shall charge a flat-rate compensation amounting to 0.5% of the purchase price per calendar week or part thereof up to a maximum total of 5% or 10% in the event of final non-collection, beginning with the first calendar week following the delivery deadline or - in the absence of a delivery deadline - with the first calendar week following the notification that the goods are ready for dispatch. Proof of higher damages and our statutory claims (in particular reimbursement of additional expenses, reasonable compensation, withdrawal) shall remain unaffected; however, the lump sum shall be offset against further monetary claims. The Buyer shall be entitled to prove that we have incurred no loss at all or only a significantly lower loss than the above lump sum.

4.4 If, in individual cases, we agree to take back the goods and cancel the contract as a gesture of goodwill, the buyer must return the goods in their original packaging. In this case, a flat-rate compensation of 15% of the purchase price, but at least of the purchase price, but at least EUR 50.00.

5. PRICES AND TERMS OF PAYMENT

5.1 Unless otherwise agreed in individual cases, our current prices at the time of conclusion of the contract shall apply in EURO, ex works, plus statutory VAT.

5.2 In the case of sale by delivery to a place other than the place of performance (Section 4 (1)), the Buyer shall bear the transportation costs ex works as well as the transport, breakage and glass insurance in the amount of 1.85% of the purchase price. If we do not invoice the transportation costs actually incurred in the individual case, a lump sum for transportation costs (excluding transport insurance) of EUR 130.00 shall be deemed agreed. Any customs duties, fees, taxes and other public charges shall be borne by the buyer.

5.3 The purchase price is due and payable within 14 days of invoicing and delivery or acceptance of the goods. However, we are entitled at any time, even in the context of an ongoing business relationship, to make a delivery in whole or in part only against advance payment. We shall declare a corresponding reservation at the latest with the order confirmation.

5.4 The buyer shall be in default upon expiry of the above payment deadline. During the period of default, interest shall be charged on the purchase price at the applicable statutory default interest rate. We reserve the right to claim further damages caused by default. Our claim to commercial maturity interest against merchants remains unaffected (§ 353 HGB) remains unaffected.

5.5 The Buyer shall only be entitled to rights of set-off or retention to the extent that his claim has been legally established or is undisputed. In the event of defects in the delivery, the Buyer's counter-rights shall remain unaffected, in particular pursuant to § 7 (5) sentence 2 of these AVB remain unaffected.

5.6 If it becomes apparent after conclusion of the contract (e.g. through an application for the opening of insolvency proceedings) that our claim to the purchase price is jeopardized by the Buyer's inability to pay, we shall be entitled to refuse performance in accordance with the statutory provisions performance and - if necessary after setting a deadline - to withdraw from the contract (§ 321 BGB). In the case of contracts for the manufacture of non-fungible goods (custom-made products), we may declare our withdrawal immediately; the statutory provisions on the dispensability of setting a deadline shall remain unaffected.

5.7 In the event of delayed payment, we may also suspend the fulfillment of our obligations from other contracts until receipt of payment. An express written notification to the customer is not required for this.

6. RETENTION OF TITLE

6.1 We reserve title to the goods sold until full payment of all our current and future claims arising from the purchase contract and an ongoing business relationship (secured claims).

6.2 The goods subject to retention of title may neither be pledged to third parties nor assigned as security before full payment of the secured claims. The buyer must inform us immediately in writing if an application is made to open insolvency proceedings or if third parties (e.g. seizures) have access to the goods belonging to us. seizures) are made on the goods belonging to us.

6.3 If the Buyer acts in breach of contract, in particular in the event of non-payment of the purchase price due, we shall be entitled to withdraw from the contract in accordance with the statutory provisions and/or to demand the return of the goods on the basis of the retention of title. The demand for return does not at the same time include a declaration of withdrawal; rather, we are entitled to demand only the return of the goods and reserve the right to withdraw from the contract. If the buyer does not pay the purchase price due, we may only assert these rights if we have previously set the buyer a reasonable deadline for payment without success or if setting such a deadline is dispensable according to the statutory provisions.

6.4 Until revoked in accordance with (c) below, the Buyer is authorized to resell and/or process the goods subject to retention of title in the ordinary course of business. In this case, the following provisions shall apply in addition.

(a) The retention of title shall extend to the full value of the products resulting from the processing, mixing or combining of our goods, whereby we shall be deemed to be the manufacturer. If, in the event of processing, mixing or combining with goods of third parties, their right of ownership remains, we shall acquire co-ownership in proportion to the invoice values of the processed, mixed or combined goods. Otherwise, the same shall apply to the resulting product as to the goods delivered under retention of title. delivered under reservation of title.

(b) The Buyer hereby assigns to us as security any claims against third parties arising from the resale of the goods or the product in total or in the amount of our possible co-ownership share in accordance with the above paragraph. We accept the assignment. The obligations of the buyer mentioned in paragraph 2 shall also apply in consideration of the assigned claims.

(c) The buyer remains authorized to collect the claim in addition to us. We undertake not to collect the claim as long as the buyer meets his payment obligations to us, there is no deficiency in his ability to pay and we do not assert the retention of title by exercising a right in accordance with paragraph 3. If this is the case, however, we can demand that the buyer informs us of the assigned claims and their debtors, provides all information necessary for collection, hands over the relevant documents and informs the debtors (third parties) of the assignment. In this case, we are also entitled to revoke the buyer's authorization to resell and process the goods subject to retention of title.

(d) If the realizable value of the securities exceeds our claims by more than 10%, we shall release securities of our choice at the buyer's request.

7. WARRANTY CLAIMS OF THE BUYER

7.1 The statutory provisions shall apply to the Buyer's rights in the event of material defects and defects of title, unless otherwise specified below.

7.2 The basis of our liability for defects is above all the agreement reached on the quality and intended use of the goods (including accessories and instructions). All product descriptions and manufacturer's specifications which are the subject of the individual contract or which were made public by us (in particular in catalogs or on our Internet homepage) at the time of conclusion of the contract shall be deemed to be an agreement on quality in this sense. Insofar as the quality has not been agreed, it shall be assessed in accordance with the statutory provisions whether a defect exists or not (Section 434 (3) BGB). Public statements made by the manufacturer or on its behalf, in particular in advertising or on the label of the goods, shall take precedence over statements made by other third parties.

7.3 In principle, we are not liable for defects that the buyer is aware of or is grossly negligent in not being aware of when the contract is concluded (§ 442 BGB). Furthermore, the Buyer's claims for defects presuppose that he has complied with his statutory inspection and notification obligations (§§ 377, 381 HGB). In the case of building materials and other goods intended for installation or other further processing, an inspection must always be carried out immediately prior to processing. If a defect is discovered during delivery, inspection or at any later time, we must be notified immediately in writing. In any case, obvious defects must be reported in writing within 7 working days of delivery and defects not recognizable during the inspection within the same period from discovery. If the Buyer fails to carry out the proper inspection and/or report defects, our liability for the defect not reported or not reported on time or not reported properly shall be excluded in accordance with the statutory provisions. In the case of goods intended for assembly, mounting or installation, this shall also apply if the defect only became apparent after the corresponding processing as a result of a breach of one of these obligations; in this case, in particular, the Buyer shall have no claims for reimbursement of corresponding costs ("removal and installation costs").

7.4 If the delivered item is defective, we may initially choose whether to provide subsequent performance by remedying the defect (subsequent improvement) or by delivering a defect-free item (replacement delivery). If the type of subsequent performance chosen by us is unreasonable for the buyer in the individual case, he may reject it. Our right to refuse subsequent performance under the statutory conditions remains unaffected.

7.5 We are entitled to make the subsequent performance owed dependent on the buyer paying the purchase price due. However, the buyer is entitled to retain a reasonable part of the purchase price in relation to the defect.

7.6 The Buyer shall give us the time and opportunity required for the subsequent performance owed, in particular to hand over the defective goods for inspection purposes. In the event of a replacement delivery, the Buyer shall return the defective item to us at our request in accordance with the statutory provisions; however, the Buyer shall not be entitled to return the item. Subsequent performance shall not include the removal, dismantling or disassembly of the defective item or the installation, attachment or assembly of a defect-free item if we were not originally obliged to perform these services;

the Buyer's claims for reimbursement of corresponding costs ("dismantling and assembly costs") shall remain unaffected and installation costs") remain unaffected.

7.7 We shall bear or reimburse the expenses necessary for the purpose of inspection and subsequent performance, in particular transport, travel, labor and material costs as well as any dismantling and installation costs, in accordance with the statutory provisions and these GTCS, if a defect actually exists. Otherwise, we may demand compensation from the Buyer for the costs incurred as a result of the unjustified request to remedy the defect if the Buyer knew or was negligently unaware that there was in fact no defect.

7.8 If a reasonable deadline to be set by the buyer for subsequent performance has expired without success or is dispensable in accordance with the statutory provisions, the buyer may withdraw from the purchase contract or reduce the purchase price in accordance with the statutory provisions. In the case of an insignificant defect, however, there is no right of withdrawal.

7.9 Claims of the buyer for damages or reimbursement of futile expenses shall only exist in accordance with § 8, even in the case of defects, and are otherwise excluded.

7.10 Claims of the buyer according to § 445a BGB exist for transport, travel, labor and material costs and, if applicable, dismantling and installation costs. The buyer cannot claim any other compensation or profit margin. Should personnel costs be incurred, our hourly rates for replacement work shall apply (Annex 1).

8. OTHER LIABILITY

8.1 Unless otherwise stated in these GTCS, including the following provisions, we shall be liable in the event of a breach of contractual and non-contractual obligations in accordance with the statutory provisions.

8.2 We shall be liable for damages - irrespective of the legal grounds - within the scope of fault-based liability in cases of intent and gross negligence. In the event of simple negligence, we shall only be liable, subject to statutory limitations of liability (e.g. care in our own affairs; insignificant breach of duty), only

a) for damages resulting from injury to life, limb or health.

b) for damages arising from the breach of an essential contractual obligation (an obligation whose fulfillment is essential for the proper execution of the contract and on whose compliance the contractual partner regularly relies and may rely); in this case, however, our liability is limited to compensation for the foreseeable, typically occurring damage.

8.3 The limitations of liability resulting from paragraph 2 shall also apply to third parties and to breaches of duty by persons (including in their favor) whose fault we are responsible for in accordance with statutory provisions. They shall not apply if a defect has been fraudulently concealed or a guarantee for the quality of the goods has been assumed⁶⁹ and for claims of the buyer under the Product Liability Act.

8.4 The Buyer may only withdraw from or terminate the contract due to a breach of duty that does not consist of a defect if we are responsible for the breach of duty. A free right of termination of the buyer (in particular in accordance with §§ 650, 648 BGB) is excluded. In all other respects, the statutory requirements and legal consequences shall apply.

9. STATUTE OF LIMITATIONS

9.1 Notwithstanding § 438 Para. 1 No. 3 BGB, the general limitation period for claims arising from material defects and defects of title is one year from delivery. If acceptance has been agreed, the limitation period shall commence upon acceptance.

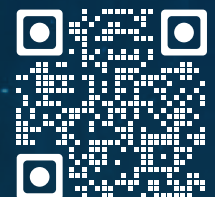
9.2 If the goods are a building or an item that has been used for a building in accordance with its normal use and has caused its defectiveness (building material), the limitation period is 5 years from delivery in accordance with the statutory regulation (§ 438 Para. 1 No. 2 BGB). Other special statutory provisions on the limitation period remain unaffected (in particular § 438 Para. 1 No. 1, Para. 3, §§ 444, 445b BGB).

9.3 The above limitation periods of the law on sales shall also apply to contractual and non-contractual claims for damages of the Buyer based on a defect of the goods, unless the application of the regular statutory limitation period (§§ 195, 199 BGB) would lead to a shorter limitation period in individual cases. The Buyer's claims for damages pursuant to § 8 para. 2 sentence 1 and sentence 2(a) and pursuant to the Product Liability Act shall become time-barred exclusively in accordance with the statutory limitation periods.

10. CHOICE OF LAW AND PLACE OF JURISDICTION

10.1 These GTCS and the contractual relationship between us and the Buyer shall be governed by the law of the Federal Republic of Germany to the exclusion of international uniform law, in particular the UN Convention on Contracts for the International Sale of Goods.

10.2 If the buyer is a merchant within the meaning of the German Commercial Code, a legal entity under public law or a special fund under public law, the exclusive - also international - place of jurisdiction for all disputes arising directly or indirectly from the contractual relationship shall be the registered office of our company. The same applies if the buyer is an entrepreneur within the meaning of § 14 BGB. However, in all cases we shall also be entitled to bring an action at the place of performance of the delivery obligation in accordance with these GTCS or an overriding individual agreement or at the Buyer's general place of jurisdiction. Overriding statutory provisions, in particular regarding exclusive jurisdiction, shall remain unaffected.





BUSINESS PARTNER

We value and respect our customers, suppliers and other business partners. Based on mutual trust and long-term relationships, we aim to grow together.

We are open to **all** partners - **regardless** of nationality or company size - and evaluate solely on the basis of strengths.



**FOR THE SAKE
OF THE ENVIRONMENT!**

**MIDAS WORKS
THANKS TO OUR
PHOTOVOLTAIC SYSTEM
WITH GREEN
POWER.**

www.my-midas.de