

# 10



# POOL LIGHTING



Lighting is another key element that significantly shapes the atmosphere of your pool and enhances the visual experience. With the right lighting, you can immerse your pool in a fascinating play of colors during the evening hours, creating a particularly dynamic and inviting atmosphere.

The new Vision Pro LED lights not only offer an even more intense light output, but are also extremely energy-efficient. This turns your pool into a real highlight that attracts everyone’s attention. The new LED lights are compatible with conventional controls as well as various panels and wall bushings, so you can easily benefit from the advantages of this modern technology. And of course, you will also find the right transformers in this section to ensure that your pool shines in all its glory.

## OVERVIEW



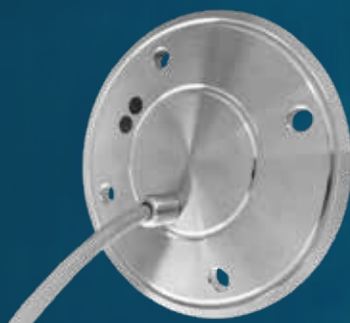
	<b>LED LIGHTS &amp; ACCESSORIES</b>
P. 246	Meteor LED Spotlight 
P. 249	VISION <sup>PRO</sup> & ADAGIO <sup>PRO</sup> LED Lights 
P. 250	Spectra LED Lights 
P. 252	Cover blending

	<b>ACCESSORIES</b>
P. 254	Controls and transformers
P. 256	Wall ducts
P. 257	Underwater spotlight
P. 258	General accessories





## METEOR LED SPOTLIGHT



Meteor LED  
Rear view

### Advantages:

- Very flat design, with 10 mm, 20 mm wall clearance flange **included**
- High performance with minimal size and low power consumption
- Pure white light with multicolor through RGBW
- **Including** 2 m connection cable, 4 x 0.34 mm<sup>2</sup> (AWG 22)
- LED also available with desired cable length (max. cable length for Meteor 99: 50 m, for Meteor 119: 40 m and for Meteor 139: 15 m)
- Made entirely of high-quality V4A stainless steel AISI316L, 1.4404, electropolished
- Transparent insert made of impact-resistant polycarbonate
- IP68, 100° beam angle
- For a water temperature of -10°C to +50°C
- 12-24 V/DC, advanced technology with numerous control options, also possible via PC, MAC, tablet, smartphone



Meteor LED  
Side view



### METEOR 139 \*

Diameter	Color	Lumen Lm	Power	PU	Code
139 mm	LED white 6.000 K	5.700	46 W/24 V	1	6421
139 mm	LED warm white 3.000 K	5.015	46 W/24 V	1	6422
139 mm	RGB	3.116	46 W/24 V	1	6423

\*max. 750 mg/l chloride content, max. salt concentration 0.3%



### METEOR 119 \*

Diameter	Color	Lumen Lm	Power	PU	Code
119 mm	LED white 6.000 K	1.900	16 W/24 V	1	6411
119 mm	LED warm white 3.000 K	1.671	16 W/24 V	1	6412
119 mm	RGBW	1.038	16 W/24 V	1	6413

\*max. 750 mg/l chloride content, max. salt concentration 0.3%



### METEOR 99 \*

Diameter	Color	Lumen Lm	Power	PU	Code
99 mm	LED white 6.000 K	950	9 W/24 V	1	6401
99 mm	LED warm white 3.000 K	836	9 W/24 V	1	6402
99 mm	RGBW	519	9 W/24 V	1	6403

\*max. 750 mg/l chloride content, max. salt concentration 0.3%

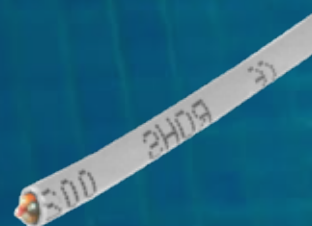


### CABLE EXTENSION PER METER

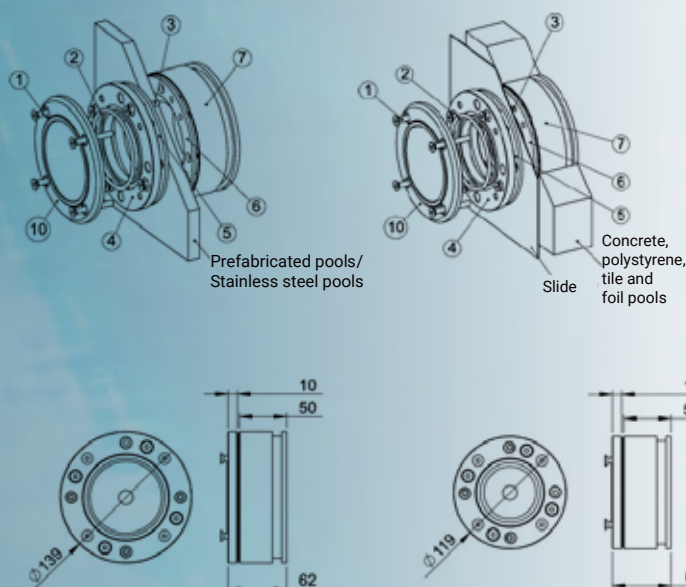
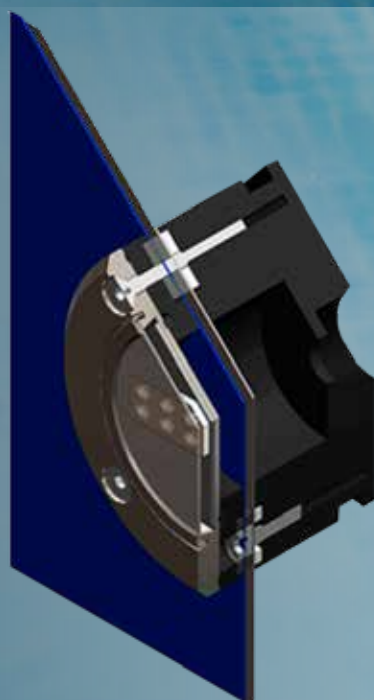
(in addition to the standard length of 2.0 m) The spotlight is produced with the desired cable length (no stock items)

Copper multi-conductor cable 4 x 0.34 mm<sup>2</sup>, PVC insulation, color: grey

Article	Code
Cable extension	6440



# METEOR BUILT-IN HOUSING



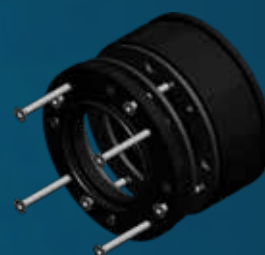
- 1) 4 x stainless steel screws for fixing the LED
- 2) O-ring
- 3) 4 x stainless steel screws for fixing the flange
- 4) Flange
- 5) + 6) Gasket
- 7) Installation housing
- 10) LED



## METEOR INSTALLATION HOUSING

for prefabricated, stainless steel, concrete, polystyrene, tile and foil pools, **Including** cable gland PVDF M12 x 15 and 1" female thread as connection for a cable conduit, see page 258, **Including** 10 mm thick plastic flange, 2 seals and 4 stainless steel screws M6 x 40 mm and M6 x 50 mm each, Material of housing and flange made of UHWM-PE plastic, color: black

Suitable for	Diameter	Code
Transition socket nipple PVC-U 32 - 25 x 1" external thread		02079
Meteor 99	99 x 50 mm	6441
Meteor 119	119 x 50 mm	6442
Meteor 139	139 x 50 mm	6443



## OPTIONAL ACCESSORIES



## STAINLESS STEEL FLANGE

made of V4A stainless steel AISI316L for Meteor built-in housing

Suitable for	Diameter	Code
Meteor 99	99 x 10 mm	6446
Meteor 119	119 x 10 mm	6447
Meteor 139	139 x 10 mm	6448



## PAR56 ADAPTER

(for retrofitting - not required for new builds)  
For installing the LED Meteor 119 or Meteor 139 in existing PAR56 installation housings, material: UHWM-PE

Suitable for	Diameter	Code
Meteor 119	176 x 60,5 mm	6449
Meteor 139	176 x 56,5 mm	6450







## METEOR LED TRANSFORMER & CONTROLS



### RGBW REMOTE CONTROL

#### WITH DMX512 RECEIVER 24 V DC

Practical and ergonomic remote control for the Meteor LED spotlights. Selection options: On/Off, mode (12 different), touch color wheel for direct color selection, dimming/brightness, direct selection of 3 different color gradients and 1x white as well as 4 different zones.

Range approx. 20 m

Protection class IP20, color: white, signal: 2.4 GHz

Batteries: 2x AAA and 1x CR2032

Dimensions/weight of the remote control: 162 x 42 x 15 mm, 85 g

Dimensions/weight of the receiver: 55 x 55 x 21 mm, 70 g

CE-certified



Article	Code
RGBW Remote Control	6458



### TRANSFORMER

24 V/DC, 187 W, 7,8 A

Material: aluminum, L x W x H: 228 x 68 x 39 mm, protection class IP 65. The transformer should have twice the power of the connected LEDs (max. 93 W), e.g. for 10 x Meteor 99 or 5 x Meteor 119 or 2 x Meteor 139. If more LEDs are installed, 2 or more transformers must be used.

Article	Code
Transformer	6451



### DMX INTERFACE

#### FOR RGB/RGBW AND WHITE LEDS

for converting the LED protocol to DMX512 standard, L x W x H: 67 x 80 x 21 mm. This is only required when using a DMX512 controller. Suitable for up to 6 LEDs.

Article	Code
DMX interface	6454



### DIMMING MODULE

#### FOR WHITE & WARM WHITE LEDS

Material: ABS, L x W x H: 106 x 122 x 6 mm, protection class IP65. This is only required for the dimming function of the white and warm white LEDs, as the RGB/RGBW LEDs already contain a dimmer. Also required when using a DMX controller. Suitable for up to 3 LED w/ww.

Article	Code
Dimming Module	6453



### SYNCHRONIZATION MODULE

#### FOR RGB/RGBW LEDS

Material: ABS, L x W x H: 181 x 122 x 56 mm, protection class IP65. This is only required if no controller is used, but only an ON/OFF switch to synchronize the colour sequences. Suitable for up to 3 multicolor LEDs.

Article	Code
Synchronization module	6452





# VISION<sup>PRO</sup> & ADAGIO<sup>PRO</sup> LED LIGHTS



\*See catalog page 252 for a selection of suitable panels

VISION<sup>PRO</sup> und ADAGIO<sup>PRO</sup> Underwater lights impress with their ultra-flat design, high luminosity and very uniform pool illumination.

Several lights can be operated in parallel. Wall bushings enable quick and easy installation. Cover panels in many materials and shapes enhance these underwater lights. With just one click on your remote control, you can give the pool a completely different look.

- VISION<sup>PRO</sup> 3 diameters available: 50 mm, 100 mm und 170 mm as **RGBW**
- ADAGIO<sup>PRO</sup> 3 diameters available: 50 mm, 100 mm und 170 mm as white or warm white
- Suitable for most 1 ½" wall ducts
- 170mm version: compatible with PAR56 recessed pot
- NoAir™ housing filled with resin
- detachable VisionPro cable: 2 x 1 mm<sup>2</sup> for 50 mm, 2 x 1.5 mm<sup>2</sup> for 100 mm, 2 x 2.5 mm<sup>2</sup> for 170 mm, each 2 m long included in the scope of delivery
- AdagioPro detachable cable: 4 m 2 x 1 mm<sup>2</sup> for 50 + 100 mm, 4 m 2 x 1.5 mm<sup>2</sup> for 170 mm included in the scope of delivery
- Very wide beam angle 120° for optimum pool illumination
- Easy to install
- Protection class IP68 (measured at a depth of 3 m)
- Protection class III
- Water temperature from -5°C to +40°C
- Suitable for all pool types
- Suitable for salt electrolysis (high-quality polymer)
- Lens: matt



170 mm



100 mm



50 mm



170 mm



100 mm



50 mm



## VISION<sup>PRO</sup> LED LIGHT \*

Also available individually.

**NEW**  
170 mm

Diameter	Color	Lumen Lm	Power	PU	Code
170 mm	RGBW	7.000	115 W/12 V	6	660-RGBW
100 mm	RGBW	3.500	65 W/12 V	6	659-RGBW
50 mm	RGBW	1.200	20 W/12 V	6	658-RGBW

**ENERGY SAVING**



## ADAGIO<sup>PRO</sup> LED LEUCHTE – PAR 56 \*

Also available individually.

Diameter	Color	Lumen Lm	Power	PU	Code
170 mm	white 5.000 K	5.500	57 W/12 V	6	675-W
170 mm	warm white 3.300 K	4.950	55 W/12 V	6	675-WW

**ENERGY SAVING**



## ADAGIO<sup>PRO</sup> LED LEUCHTE \*

Also available individually.

Diameter	Color	Lumen Lm	Power	PU	Code
100 mm	white 5.000 K	2.600	25 W/12 V	6	676-W
100 mm	warm white 3.300 K	2.400	23 W/12 V	6	676-WW
50 mm	white 5.000 K	750	8 W/12 V	6	677-W
50 mm	warm white 3.300 K	700	8 W/12 V	6	677-WW

**ENERGY SAVING**





## SPECTRA LED LIGHTS

SPECTRA underwater lights impress with their ultra-flat design, high luminosity and very uniform pool illumination. Several lights can be operated in parallel. Wall bushings enable quick and easy installation. Cover panels in many materials and shapes enhance these underwater lights. With just one click on your remote control, you can give the pool a completely different look - different white tones can be selected as well as 11 different RGB colors.

- 3 diameters available: 50 mm, 100 mm and 170 mm
- Suitable for most 1 1/2" wall bushings
- 170mm version: compatible with PAR56 recessed pot
- NoAir™ housing filled with resin: no water ingress
- Suitable for salt electrolysis thanks to the use of high-quality polymers
- Detachable, 2 m cable 2 x 1 mm<sup>2</sup> included in the scope of delivery
- programmable (RGB):
  - cold-white
  - neutral-white
  - warm-white
  - 11 RGB colors with soft transitions
- Very wide beam angle 120° for optimum pool illumination
- Easy to install
- Protection class IP68 (measured at a depth of 3 m), protection class III
- Water temperature from -5°C to +40°C
- Suitable for all pool types
- Suitable for salt electrolysis (high-quality polymer)
- Same color gradient after switching on again or after power interruptions
- Lens: clear



### SPECTRA LED LEUCHTE – PAR 56 \*

also available individually



Diameter	Color	Lumen Lm	Power	PU	Code
170 mm	cool white or warm white or blue 3,000 K-6500 K	2.400	32 W/12 V	6	655-W
170 mm	RGB	2.450	32 W/12 V	6	655-RGB



### SPECTRA LED LEUCHTE \*

also available individually



Diameter	Color	Lumen Lm	Power	PU	Code
50 mm	cool white or warm white or blue 3,000 K-6500 K	550	8 W/12 V	6	657-W
50 mm	RGB	450	8 W/12 V	6	657-RGB
100 mm	cool white or warm white or blue 3,000 K-6500 K	1.500	20 W/12 V	6	656-W
100 mm	RGB	1.500	20 W/12 V	6	656-RGB



170 mm



100 mm



50 mm

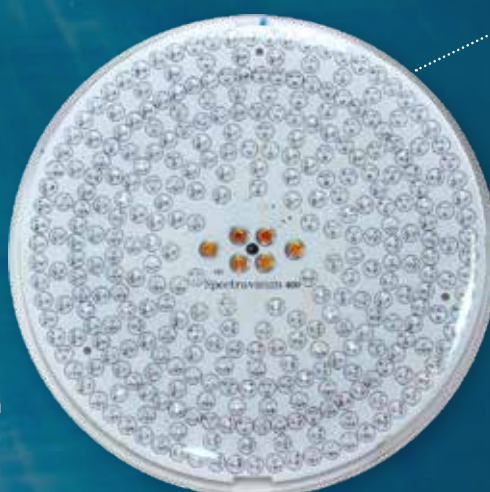
# LED REPLACEMENT LIGHTS



## LED REPLACEMENT LIGHT PAR 56 WHITE AND RGB

ENERGY  
SAVING

- Shatterproof polycarbonate
- Flat design
- White/RGB LED replacement lamp
- Intense light intensity
- Suitable for all UWS PAR 56
- Service life > 25,000 hours
- **Includes** 4 m connection cable 2 x 1 mm<sup>2</sup>
- Waterproof encapsulated, 120° beam angle
- Protection class IP68 measured at a depth of 1 m
- Max. water temperature +35°C
- Color temperature 9,000 K
- Also available individually



Side view of the lights

Color	Number of LEDs	Lumen	Power	PU	Code
white	324	1.850 Lm	19W/12 V	6	PLW56-400
white	531	2.100 Lm	28W/12 V	6	PLW56-700
RGB	324	925 Lm	21W/12 V	6	PLS56-400
RGB	531	1.450 Lm	25W/12 V	6	PLS56-700



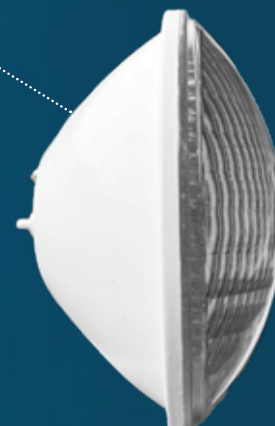
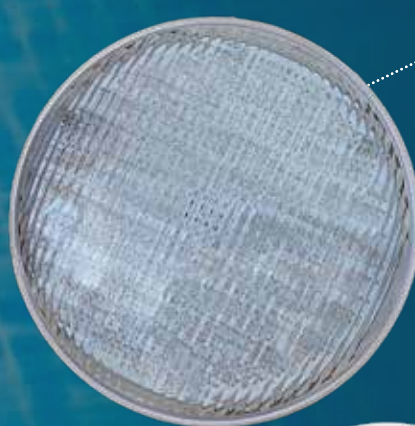
## LED REPLACEMENT LIGHT PAR56

The rear curvature, as with the classic General Electric PAR56 lamp, enables quick and easy replacement with all standard 300 W PAR56 bulbs on the market.

**Note:** The #RC-100 or #RCO-100 control unit is required to control the RGB #470 (see catalog page 254).

The signals for the RGB bulb are transmitted via cable - this ensures problem-free and stable control and synchronization of the colour gradients. Other inexpensive RGB bulbs available on the market with an enclosed radio remote control, where the signal receiver is located in the bulb (no external control), often have problems with control and synchronization.

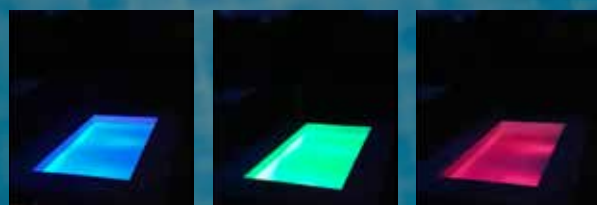
Compatible e.g. with spotlight #442-TO (see catalog page 263), also available individually.



Side view of the lights



Rear view



Color	Lumen approx.	Kelvin approx.	Power	PU	Code
RGB	650	-	15 W/12 V	12	470
blue	350	-	25 W/12 V	12	473
warm white	2100	3000	30W/12 V	12	474
white	2430	6500	30W/12 V	12	476





# COVER BLENDING



## COVER BLENDING VISION<sup>PRO</sup>, ADAGIO<sup>PRO</sup> AND SPECTRA

NEW

#658  
#699  
#659  
#677  
#698

Model FLAT, material: stainless steel V4A/AISI 316L

Ø Diameter	Ø Outer Diameter	Color	PU	Code
50 mm	128 mm	polished silver	6	689
100 mm	185 mm	polished silver	6	688
170 mm	280 mm	polished silver	6	687

Model FLAT, material: Polymer, also available individually.

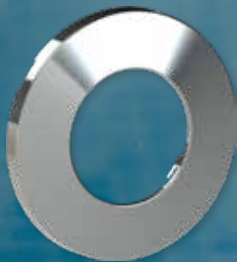
Ø Diameter	Ø Outer Diameter	Color	PU	Code
50 mm	128 mm	white	6	686
100 mm	168,5 mm	white	6	696
100 mm	168,5 mm	light gray	6	699
170 mm	256,5 mm	white	6	695
170 mm	256,5 mm	light gray	6	658

Model RA, material: stainless steel V4A/AISI 316L, also available individually

Ø Diameter	Ø Outer Diameter	Color	PU	Code
100 mm	176 mm	polished silver	6	681
170 mm	250 mm	polished silver	6	680

Model RA, Material: Polymer, also available individually

Ø Diameter	Ø Outer Diameter	Color	PU	Code
100 mm	176 mm	white	6	679
100 mm	176 mm	dark gray	6	684
100 mm	176 mm	sand	6	685
100 mm	176 mm	light gray	6	677
100mm	176 mm	anthracite	6	659
170 mm	250 mm	white	6	678
170 mm	250 mm	dark gray	6	682
170 mm	250 mm	sand	6	683
170 mm	250 mm	light gray	6	698



#687, #688, #689



#695, #696, #686



NEW  
#658  
#699

#658, #699



NEW  
#659

#659



#680, #681



#678, #679



#682, #684



#683, #685



NEW  
#677  
#698

#677, #698



#667, #664



#665, #668



#666, #669



#697, #660

Model RD, material: Polymer, also available individually

**NEW**  
#663

Ø Diameter	Ø Outer Diameter	Color	PU	Code
100 mm	176 mm	weiß	6	667
100 mm	176 mm	dunkelgrau	6	668
100 mm	176 mm	sand	6	669
100 mm	100 mm	hellgrau	6	697
170 mm	250 mm	schwarz	6	663
170 mm	250 mm	weiß	6	664
170 mm	250 mm	dunkelgrau	6	665
170 mm	250 mm	sand	6	666
170 mm	170 mm	hellgrau	6	660



#663

**NEW**

## SPARE PARTS VISION<sup>PRO</sup>, ADAGIO<sup>PRO</sup> AND SPECTRA



### ADAGIO<sup>PRO</sup> AND SPECTRA CONNECTION SET

Consisting of: 1 ½" union, crimp seal and contact plug

Article	Code
Spectra connection set 50 mm-170 mm	675-E3
Adagio connection set 50 mm-100 mm	675-E1
Adagio connection set 170 mm	675-E2



#675-E1



#675-E2



#675-E3



### FLAT GASKET

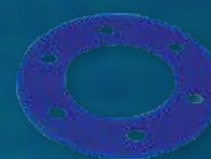
90 x 47 x 2 mm, for flange/wall feed-through

Article	PU	Code
Silicone flat gasket, blue	6	670-E1
Flange gasket foam rubber, black	10	674-E1

Article	PU	Code
Screw set (6 pcs.) for wall ducts/flange 5 x 20 mm made of stainless steel V4A	6	670-E5

for wall bushings/lock nut

Article	PU	Code
Silicone flat gasket, blue	6	674-E2



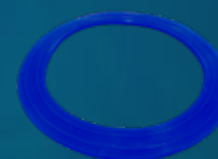
#670-E1



#674-E1



#670-E5



#674-E2





# CONTROLS & TRANSFORMERS



## LINK-TOUCH CONTROL SYSTEM FOR VISION<sup>PRO</sup> AND ADAGIO<sup>PRO</sup>

- Portable control unit for MIDA.Maxx/MIDA.Boost heat pumps MIDA.Force and MIDA.Joy, pool lighting and cover
- With high-frequency connection (wireless)
- For stable connection with pool lighting, and the pool cover
- Also in basements and technical rooms with a wide range
- Simple operation thanks to clear display
- Long-life battery **included** (30 days standby)
- Rechargeable via USB-C connection
- Wall bracket **included**  
(can be connected directly to a power source) or free-standing installation
- Dimensions: 186 x 88 x 17 mm,
- Protection class IP20
- Only for Vision<sup>PRO</sup> and Adagio<sup>Pro</sup> RGB LEDs, see catalog page 249

- Note:**
- Prerequisite is the control unit #RC-151 or #RCO-150 (see catalog page 255)
  - To connect to the heat pump the connection module #3601 (see catalog page 151) is required for connection to the heat pump.
  - Temperature display on the Link Touch only possible with connection plug #3601 (see catalog page 151), required.

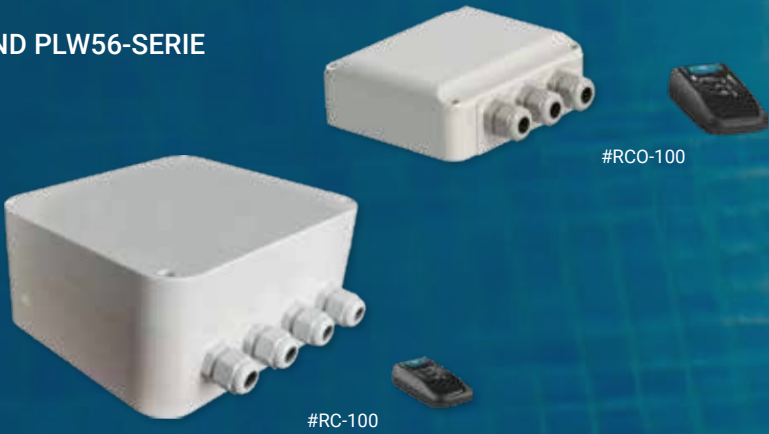


Article	Code
Link-Touch control system RGB only for LED's and pool cover	3603



## CONTROLS FOR VISION<sup>PRO</sup>, ADAGIO<sup>PRO</sup>, SPECTRA, PLS56 AND PLW56-SERIE

Base station with signal receiver, 230 V AC input, 2 outputs for pool cover, garden lighting, etc., **Includes** remote control black/blue for switching the lights on and off and changing the color mode.  
Protection class: IP54, protection class II, Permissible ambient air temperature: 0°C to +40°C  
#RCO-100 **without** transformer  
#RC-100 **including** transformer



for	Dimensions	Trafo	Code
Vision <sup>PRO</sup> /Adagio <sup>PRO</sup> /PLS56-/PLW56-Serie	150 x 157 x 51 mm	–	RCO-100
Vision <sup>PRO</sup> /Adagio <sup>PRO</sup> /PLS56-/PLW56-Serie	195 x 194 x 90 mm	200 VA*	RC-100

\***Including** 12 V output for LED headlights



## CONTROLS FOR VISION<sup>PRO</sup> AND ADAGIO<sup>PRO</sup> WITH DIMMING FUNCTION

Like #RC-100 and #RCO-100 (see catalog page 254), but as an intelligent control unit for VisionPro and AdagioPro RGB with dimming function (100 % - 75 % - 50 %), as well as additional connections possible via DMX 512, RS485, CAN BUS and SD card slot, **Including** DIP switch for selecting the control function and remote control black/red.

Max. 16 LEDs can be synchronized.

#RCO-150 **without** transformer

#RC-151 **including** transformer



#RCO-150



#RCTX



#RC-151

for	Dimensions	Trafo	Code
Vision <sup>PRO</sup> /Adagio <sup>PRO</sup>	150 x 157 x 51 mm	–	RCO-150
Vision <sup>PRO</sup> /Adagio <sup>PRO</sup>	298 x 420 x 145 mm	350 VA*	RC-151
Replacement radio remote control			RCTX

\* **Including** 12 V output for LED headlights



## TRANSFORMERS

EXCLUSIVE  
MIDAS

Fully encapsulated transformer for swimming pool lighting in accordance with DIN EN 61558-2-6, Protection class IP65, protection class II - IP65, overheating protection: thermal fuse 130°C.

Power	For 12 Volt lamps	Code
50 VA	1 x 50 W	458
100 VA	1 x 100 W	459
100 VA	2 x 50 W	455
150 VA	1 x 150 W	461
150 VA	2 x 75 W	465
300 VA	1 x 300 W	456
350 VA	2 x 175 W	462
600 VA	2 x 300 W	457
900 VA	3 x 300 W	463



## TOROIDAL TRANSFORMER

NEW

Toroidal transformer 12 / 230 VAC, 150VA, protection class IP64, for Duravision (VisionPro, AdagioPro, Spectra), wall mounting possible, is strongly recommended if #RC-151 or #RC-100 are not used

Power	Code
50 VA	TR-150







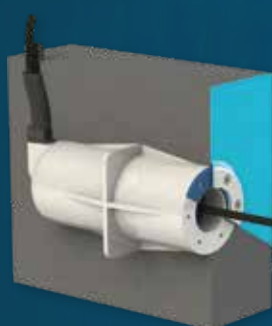
## WALL DUCTS



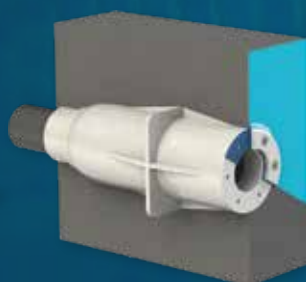
### WALL DUCTS

FOR VISION<sup>PRO</sup> ADAGIO<sup>PRO</sup> AND SPECTRA

Depending on the length of the wall bushing, 50-100 cm of cable can be stowed inside, so available individually



#670, #671



#672, #673



#674



#675

	670	672	671	673	674	675
Length	129,5 mm	152 mm	247 mm	276 mm	160 mm	130 mm
Material	ABS Plastic	ABS Plastic	ABS Plastic	ABS Plastic	ABS Plastic	Stainless steel V4A/AiSi 316L
Connection	3/4" Flex tube	50/63 mm	3/4" Flex tube	50/63 mm	3/4" Flex tube	3/4" Flex tube
Sealing	Cable gland	-	Cable gland	-	Cable gland	Cable gland
for concrete, tile and liner pools	✓	✓	✓	✓	-	✓
for prefabricated, wooden and steel wall pools					✓	-
for polystyrene pools	✓	✓		✓		✓
<b>Including</b> flange, seal, screws	✓	✓	✓	✓	✓	✓
<b>Including</b> lock nut	-	-	-	-	✓	-
<b>Including</b> Flex tube 3/4"	✓	-	✓	-	✓	✓
PU	6	6	6	6	6	6



### TOOL SET

FOR VISION<sup>PRO</sup>, ADAGIO<sup>PRO</sup> AND SPECTRA

Simple fixing of the light module in the cover panel,  
Simple locking of the cable gland,  
Easy cable routing with cable puller



Article

Code

Tool Set

691\*

\*free of charge on request when purchasing two or more lights

# UNDERWATER SPOTLIGHT



## UNDERWATER SPOTLIGHT MADE ENTIRELY OF STAINLESS STEEL

Made of V4A stainless steel /AISI 316L (without bulb)

The stainless steel cover is only 16 mm away from the inside of the pool and is therefore very flat and elegant. Especially suitable for prefabricated pools - the pool cut-out is covered and has no contact with the pool water. **Including** cover ring and installation pot, with seals and screws for foil/prefabricated pools. **Includes** fixing for LED. Supplied without connection cable and light source. Please order cable protection tube  $\frac{3}{4}$ " separately #441-3TM (see catalog page 258). Matching LED: #PLW56 and #PLS56 on catalog page 257, also available individually



Suitable for	Code
Foil basin, <u>without</u> bulb	491-MP*
Screw set prefabricated basin for #491-MP	491-E1*

\*Note: max. 250 mg/l chloride content - salt electrolysis is **not** recommended

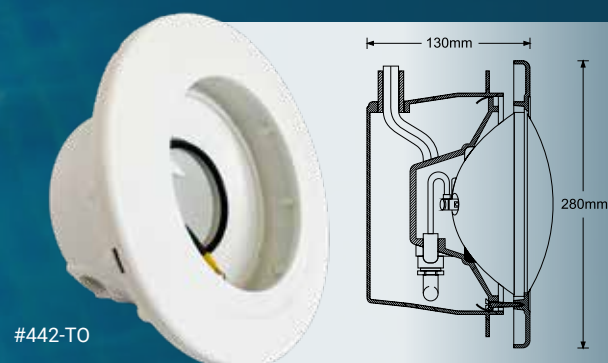


## UNDERWATER SPOTLIGHT

OFF ABS (without bulb)

EXCLUSIVE  
MIDAS

Classic version for foil/finished pools, complete with cover ring and installation pot made of ABS, installation pot optionally with side or base outlet, PAR56, with 2.5 m cable 2 x 4 mm<sup>2</sup>, please order cable protection tube  $\frac{3}{4}$ " separately #441-3TM (see catalog page 258), LED's #470 and #473, (see catalog page 251), or #PLW56 or #PLS56 (see catalog page 254), can be used, also available individually



Suitable for	PU	Code
Foil basin, <u>without</u> bulb	4	442-T0

Spare part	Code
Replacement ABS cover for headlight 442-T0	442-E2
Flange for headlight # 442-T0	442-E3
Flange gasket for headlight # 442-T0	442-E4
M6 screw set (16 pieces) for headlights # 442-T0	442-E6





# GENERAL ACCESSORIES

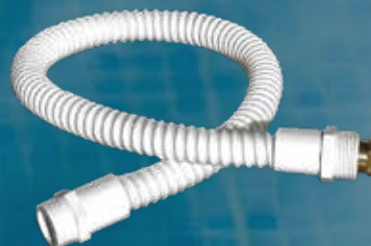


## CABLE CONDUIT

EXCLUSIVE  
MIDAS

Suitable for all PAR 56 underwater spotlights, connection 3/4" AG, length 1 m, Color: white, also available individually

Article	PU	Code
Cable protection conduit, 1 m, Color: white	50	441-3TM



## REDUCING NIPPLE

Required for the transition from the Meteor installation housing to the cable conduit #441-3TM 1" male thread x 3/4" female thread, PVC-U, 10 bar, Color: grey

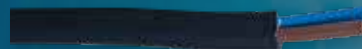
Article	PU	Code
Reducing nipple	120	20148



## H07RN-F CABLE FOR ALL UNDERWATER HEADLIGHTS

Cable for installation between transformer and cable junction box  
Rubber connection cable, flexible, 450/750 V, temperature range: -7°C to +60 °C, oil-resistant, flame-retardant, UV-resistant, 1000 VAC protected, can be used for short-circuit and earth-safe installations in accordance with IEC 60364-5-52/HD 60364-5-52/VDE 0100 Part 520. In accordance with EN 50565-2, compliant with EU Directive 2014/35/EC (Low Voltage Directive), with harmonization mark, 50 m rolls, Color: black

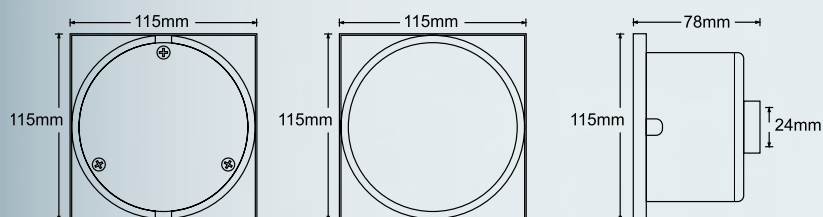
Article	Outer Ø	Code
Cable 2 x 2,5 mm²	10,2 - 11,7 mm	639
Cable 2 x 4,0 mm²	11,8 - 13,4 mm	638
Cable 3 x 6,0 mm²	14,1 - 15,9 mm	637



## DISTRIBUTOR CAN

EXCLUSIVE  
MIDAS

ABS, cable gland 2 x 3/4", also available individually



Version	PU	Code
ABS	40	417-TN

